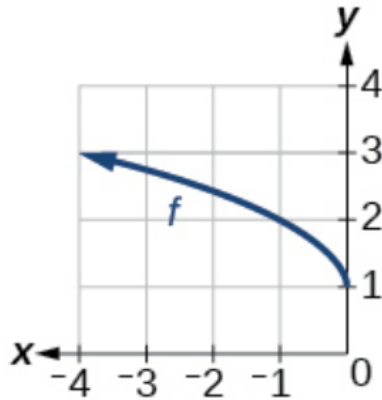


Exercise 45

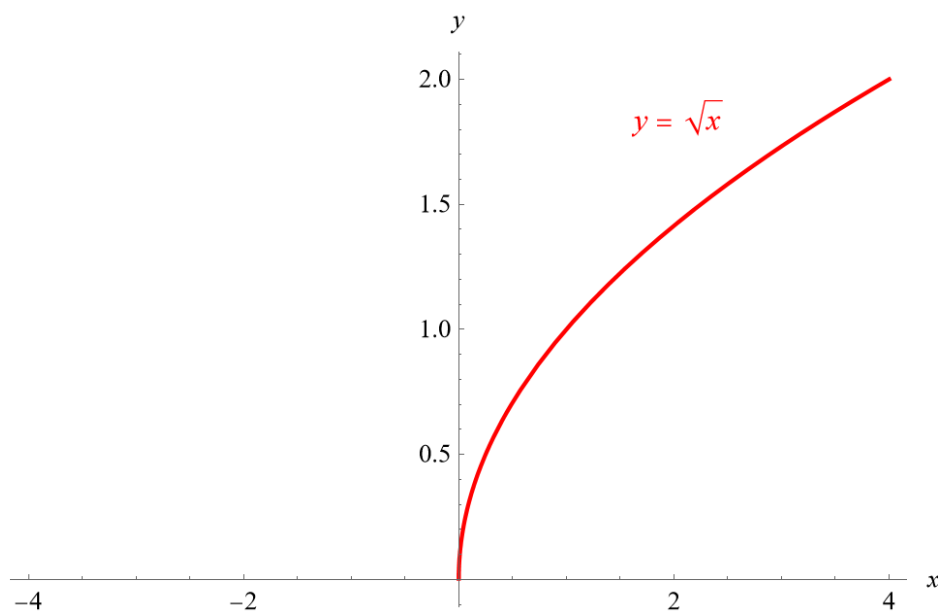
For the following exercises, use the graphs of the transformed toolkit functions to write a formula for each of the resulting functions.



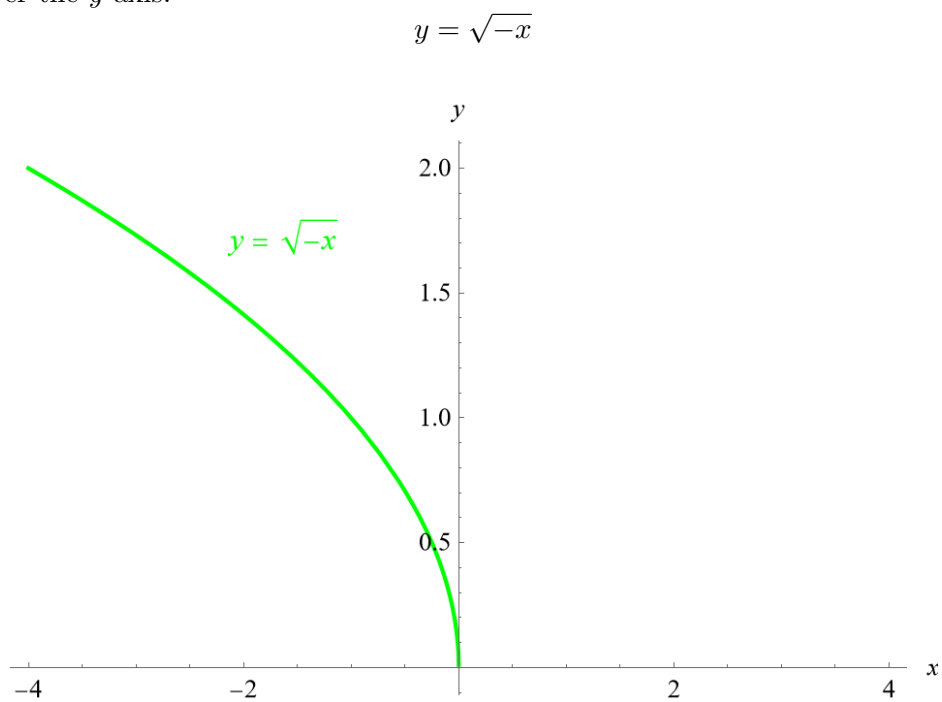
Solution

This is a square root function that's been reflected over the y -axis and shifted up by 1 unit. Start with the standard square root function.

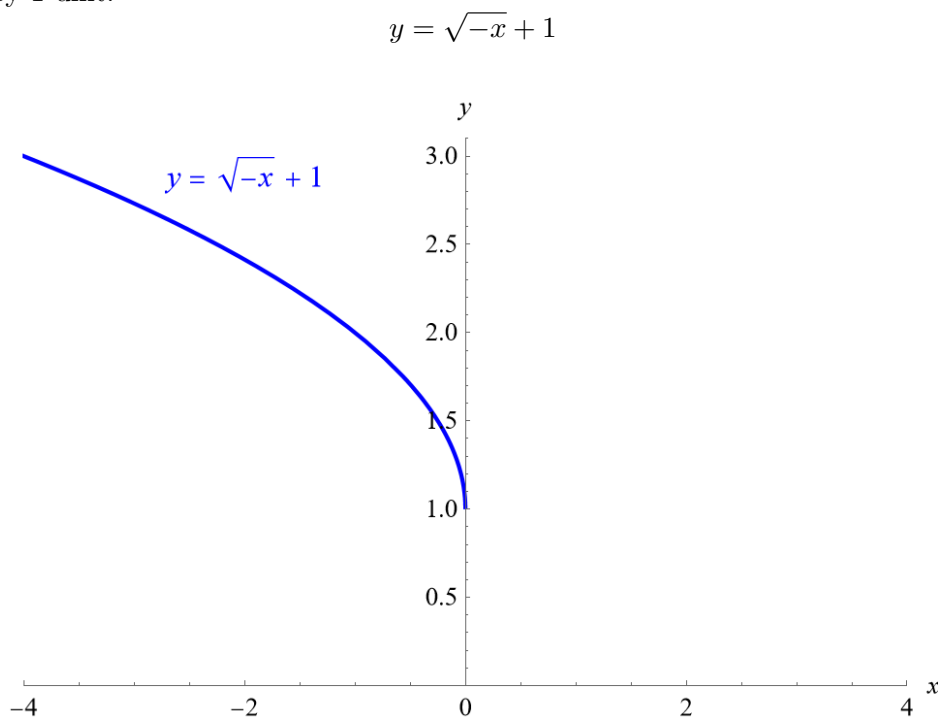
$$y = \sqrt{x}$$



Reflect it over the y -axis.



Shift it up by 1 unit.



$$f(x) = \sqrt{-x} + 1$$